



GARTON JONES
LONDON

Westwood Building, Chelsea Creek
Fulham SW6

GARTON JONES.COM



Westwood Building, Chelsea Creek Fulham, SW6

GARTON JONES.COM

11 Park Street
Chelsea Creek
London
SW6 2FS

Sales +44 (0) 20 7824 7090
paul@gartonjones.com
www.gartonjones.com

£1,100 Per Week

Parking Included for this stunning two-bedroom apartment measuring 957 sqft (88 sqm), located on the fourth floor within the prestigious Chelsea Creek development, offered for rent for the first time. The property features a spacious open-plan living area with a custom-designed shaker-style kitchen, balcony access, two double bedrooms including a master with ensuite, and a luxury guest bathroom adorned with bespoke porcelain tiles.

Exclusive membership to the Halcyon Club for residents of King's Tower and Westwood House, which includes:

- Private cinema

- Meeting rooms

Development Amenities

- Residents' spa with fully equipped gym

- Swimming pool, sauna & steam room

- 24-hour concierge service

- Landscaped communal gardens

Prime Location

- Close to Imperial Wharf Overground Station

- Moments from King's Road and Chelsea Harbour

- Access to vibrant restaurants, bars, and boutiques

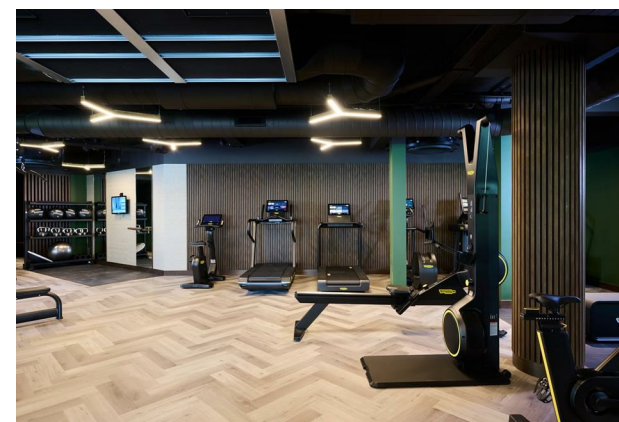
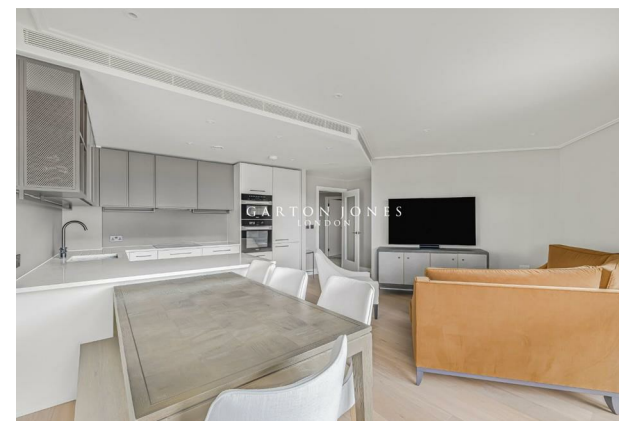
Minimum term 12 months

Deposit 6 weeks

Council Tax — London Borough of Hammersmith & Fulham Council — Band G

EPC B (84)

- Stunning Two Bedroom Apartment
- Parking for 1 car
- 957sqft (88sqm)
- Balcony
- Luxury Furniture
- Modern Kitchen with Integrated Appliances
- 4th Floor with Lift
- Access to the Halcyon Club
- 24 Hour Concierge, Gymnasium & Spa
- Close to Imperial Wharf Station

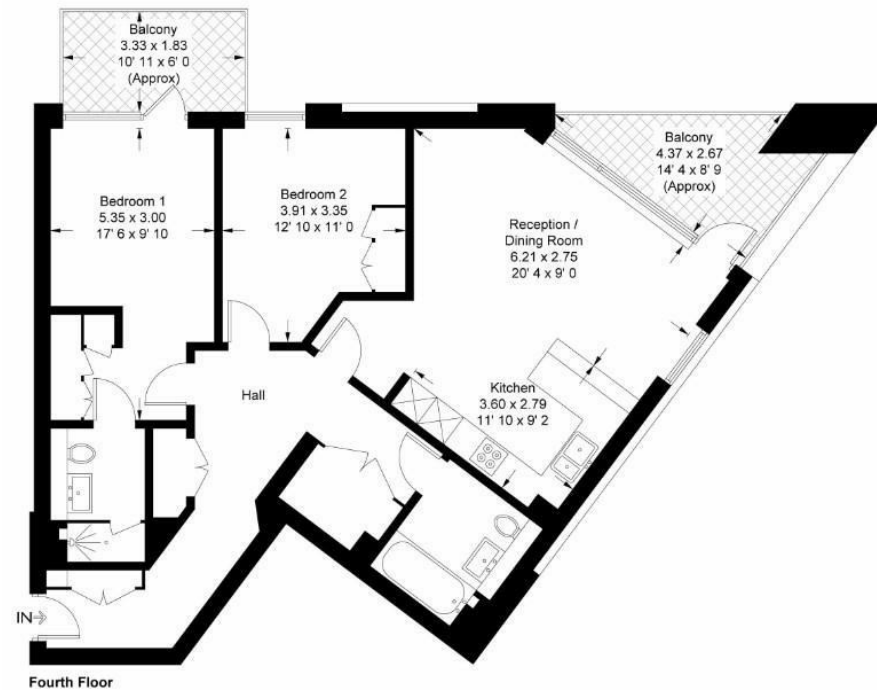


EPC certificate available on request.

Westwood Building

Approximate Gross Internal Area = 957 sq ft / 88.9 sq m
Balcony = 133 sq ft / 12.4 sq m

GARTON JONES
LONDON



This plan is not to scale and must be used as layout guidance only. All measurements and areas are approximate and should not be relied upon to provide accurate information. This plan must not be relied upon when making property valuations, design considerations or any other such relevant decisions. We accept no responsibility or liability (whether in contract, tort or otherwise) in relation to any loss whatsoever arising from or in connection with any use of this plan or the adequacy, accuracy or completeness of it or any information within it.



